



www.mnseng.net

مشاربي الشثري
MSHARI ALSHATHRI
CONSULTANT ENGINEERING
للإستشارات الهندسية





In the context of the Kingdom's direction leadership the implementation of Vision 2030 and achievement of its objectives, Mshari Nasser Al-Shathri and his partner Consultant Engineering are seeking to provide engineering consultancy services in various fields (transport and traffic, urban planning, architecture, civil engineering and projects management). The consulting office is in partnership with the international expert houses in the completion of the work. The office contributes to the implementation of several projects throughout the Kingdom, by achieving the requirements to the fullest through the team of efficient, technical and administrative capabilities that contribute to the highest level of engineering consultancy services

Our mission is to derive from our unwavering commitment to innovative solutions that lead to a long-term partnership with our customers and the community. We are committed to a range of professional values and focus on serving our home country through designs related to our culture and environment

Mshari Al-Shathri

FOR A BETTER QUALITY OF LIFE

VISION To become an internationally renowned engineering consulting firm respected for excellence in high quality engineering service and delivery.

VALUES The following company values form the basis for all our interactions:

ENGINEERING EXCELLENCE Instead of focusing solely on growth, MSHARI ALSHATHRI aims at market leadership through quality strives for engineering excellence on an ongoing basis.

This is achieved through:

- a holistic approach to problem solving
- a high level of ingenuity and creativity
- a constant desire for improvement
- strong motivation and dedication
- diligence and persistence
- ongoing staff development programs- knowledge management and competence development.

Respect Everyone is treated with respect and dignity, regardless of their position, ethnicity, religion. This is true for both MACE staff and third parties.

Honesty Is considered crucial for professional relationships. This is why "walking the talk" is important to us.

Reliability All our employees take ownership of their assignments and are accountable for their actions. High importance is given to meeting project requirements and deadlines, ensuring the best quality.

Fairness Everyone is treated fairly, and fairness is also a guiding principle in decision making



OUR PEOPLE OUR VALUES

EFFECTIVE COOPERATION In order to best serve clients' needs, MSHARI ALSHATHRI employees make a concerted effort in their work. United as a team, they successfully bridge the gap, time zones and a variety of cultures.

GREAT PEOPLE Our people make a great difference. Highly motivated employees are keen to excel and contribute to the overall success of the company. Problems are seen as challenges, and finding the best solution is the goal. MSHARI ALSHATHRI strives for long-term working relationships and encourages its employees to see themselves as MSHARI ALSHATHRI ambassadors.



Service Portfolio

MSHARI ALSHATHRI Consulting Engineering is a building services engineering company that provides a strategic, flexible, experienced and innovative approach to delivering engineering and management consultancy services for its clients. We have a proven track record in delivering client projects to the most demanding of timescales, within budget and with the lowest possible client risk. This specialized expertise and experience gives our clients the confidence and peace of mind from the outset that their project is in the best possible hands. All our projects are led by a highly experienced Director and a team with a passion for delivering high quality commercial engineering solutions alongside an excellent level of service. As part of this approach, we focus on designing out systems rather than designing in complex and expensive kit and in seeking to balance the up-front capital cost of equipment and services against the associated life cycle costs of operating the building and provide options based on specific commercial requirements. Our approach embodies the maximum possible contribution from each of the three pillars of environmental, economic and social sustainability. We use this environmental expertise on a bespoke basis to maximize environmental and economic sustainability and to design in accessibility for all sections of society. This enhances the role buildings play in sustainable local communities. In summary, we believe our commercial engineering approach and passion for delivering the highest levels of customer service sets us apart from other consultants and consistently delivers considerable added value to any project.

CONSULTING FOLLOWING A ONE-STOP-APPROACH, MSHARI ALSHATHRI OFFERS ITS CLIENTS A COMPREHENSIVE RANGE OF CONSULTING, ENGINEERING AND PROJECT MANAGEMENT SERVICES, ALONG WITH A VARIETY OF ADDITIONAL SERVICES

CONSULTING

- Market Studies
- Master Plans
- Transaction Advisory Services,
- Due Diligence Analyses
- Pre-Feasibility Studies
- Bankable Feasibility Studies
- Lender's Engineer
- Dispute Resolution
- PPP Advisory Services
- Project Screening
- Financial Advisory Services
- Institutional Analysis and Strengthening
- Operation and Maintenance Consultancy

ENGINEERING

- Pre-Concept
- Conceptual Design
- Basic Design
- FEED, Tender Design
- Permit Application Design
- Guide Design
- Detailed Design
- Construction Design
- Design Review
- As-Built Documentation
- Integrity Assessment
- Rehabilitation Design
- Modification Design
- Decommissioning Planning

PROJECT MANAGEMENT

- Project Organization
- Project Management Consultancy
- Risk Management
- Stakeholder Management
- Project Execution Planning
- Procurement Services
- Supply Chain Management
- Construction Supervision
- Commissioning Supervision
- Operation Supervision

ADDITIONAL SERVICES

- Geology & Hydrogeology
- Geotechnical Engineering & Soil Mechanics
- Urban & Environmental Planning
- Environmental & Social Impact Assessments
- Information Management - GIS & BIM
- Risk & Safety Management Protection
- of Critical Infrastructure
- Rehabilitation of Aging Infrastructure
- Energy Concepts
- Climate Change Management
- Disaster Risk Management
- Sustainability Advisory

Presence In Saudi Arabia



Offices Location

RIYADH

Prince Sultan Bin Abdulaziz St.

MAKKAH

Ibrahim Al Khalil St. Alwali.

MEDINA

Omar Bin Al Khattab St.

TABUK

Prince Abdul Majid St.

DAMMAM

Prince Mohammed Bin Fahd St.

450+ PROFESSIONALS
100+ PROJECTS
4+ BRANCHES
14+ YEARS EXPERIENCE



Project Management And Engineering

MANAGEMENT

PROJECT LINE

ENGINEERING

MASTER PLANNING

1

FEASIBILITY

PROJECT MANAGEMENT

FEASIBILITY STUDIES

PROGRAMME MANAGEMENT

TRANSPORT PLANNING

2

PLANNING

BUSINESS PLANNING

TRAFFIC STUDIES

FINANCIAL MODELLING

ARCHITECTURAL DESIGN

3

DESIGN

ASSET MANAGEMENT

URBAN DESIGN

PROJECT CONTROLL

STRUCTURAL ENGINEERING

RISK ANALYSIS

MECHANICAL ENGINEERING

4

PROSUREMENT

SCEDULE PLANNING

INRASTRUCTURE ENGINNERING

DESIGN REVIEW

WATER TREATMENT&DESTRIIBUTION

5

CONSTRUCTION

VALUE ENGINEERING

WASTE WATER MANAGEMENT

COST CONTROL

PROCUREMENT MANAGEMENT

POWER AND ELECTRICAL

6

OPERATION
MAINTANANCE

TENDER EVALUTION

ENGINEERING

CONTRUCTION MANAGEMENT

BUILDING MANAGEMENT SYSTEMS

MANAGEMENT& SITE
SUPERVISION

WASTE MANAGEMENT

QUALITY CONTROLL

QUANTITY SURVEYING

Our Clients

Our clients, like our people, are our most treasured assets. We nurture every client relationship with commitment, passion and integrity, which is the reason why most of our clients have been with us through the decade of our existence



أمانة منطقة
المدينة المنورة
Madinah Regional Municipality



أمانة العاصمة المقدسة
HOLY MAKKAH MUNICIPALITY



أمانة منطقة تبوك
Municipality Of Tabuk



أمانة منطقة عسير
ASSIR MUNICIPALITY



وزارة الشؤون البلدية
والقرية والإسكان
Ministry of Municipal Rural Affairs & Housing



وزارة النقل
TRANSPORT MINISTRY



أرامكو السعودية
saudi aramco



نوا
المياه الوطنية



MEDICAL VILLAGE
القرية الطبية



هيئة المدن والمناطق الاقتصادية الخاصة
Economic Cities and Special Zones Authority



الهيئة العامة للسياحة والتراث الوطني
Saudi Commission for Tourism & National Heritage
مستقبل وطن.. نبينة معاً
sctnh.gov.sa



الهيئة الملكية لمدينة الرياض
ROYAL COMMISSION FOR RIYADH CITY



هيئة تطوير منطقة المدينة المنورة
ALMADINAH REGION DEVELOPMENT AUTHORITY



هيئة تطوير منطقة مكة المكرمة



الهيئة العامة للنقل
TRANSPORT GENERAL AUTHORITY
لؤلؤ المستقبل
TGA

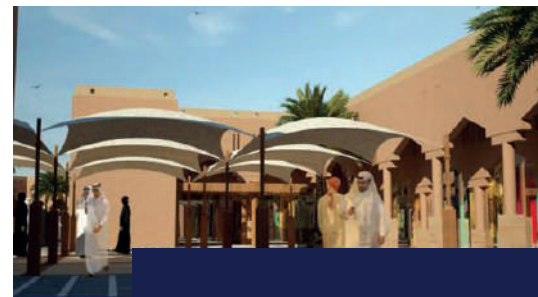
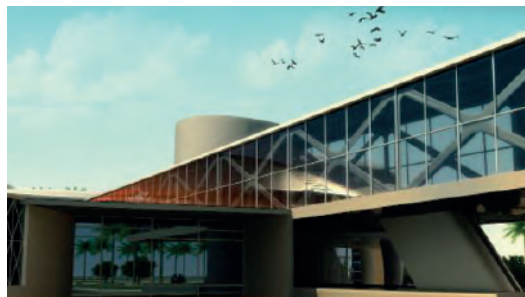
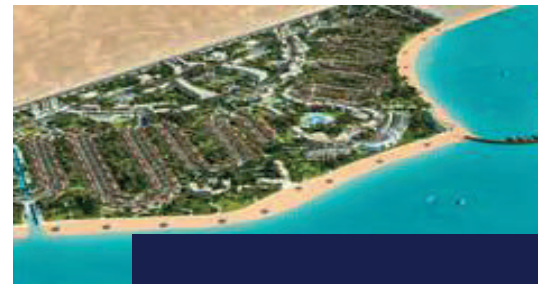


مدن MODON
الهيئة العامة للمدن الاقتصادية ومناطق التنمية
Saudi Authority for Economic Cities and Technology Zones

Our Services

- Mshari Al-Shathri successfully manages large-scale multidisciplinary projects in all sectors.
- The experience and know-how of professional staff assures unrivalled levels of excellence.

- . URBAN PLANNING & URBAN DESIGN
- . ARCHITECTURE
- . CONSTRUCTION & SUPERVISION
- . SOFT & HARD LANDSCAPE
- . ROAD & TRANSPORTATION
- . PROJECT MANAGEMENT



Dammam Public Transport System

CLIENT:



• **Project:** Dammam Public Transport preliminary Design



TECHINICAL DATA: integrated Public Transport 4 trunk routes:

Red Line LRT	52km
Orange line LRT	41km
Blue Line BRT	34km
Green Line BRT	33km
99 stations	

SERVICE: Royal Haskoning DHV and Mshari Al-Shathri Consultant Engineering have been appointed to conduct a feasibility study and preliminary design for the Dammam public transport system, the Dammam Integrated Public Transport Network (IPTN). Next an RFP for the next project stage will be prepared. The planning and time line of this project is provided Feasibility Study, Preliminary Design, RFP next stages.

8 public Transport interchanges 350 km feeder bus network 7000 Park & Ride spaces.



Fourth Ring road

CLIENT:



- **PROJECT:** Makkah-Jeddah interchange
SERVICE: soft & Landscape



Area:

[281.100 M²]



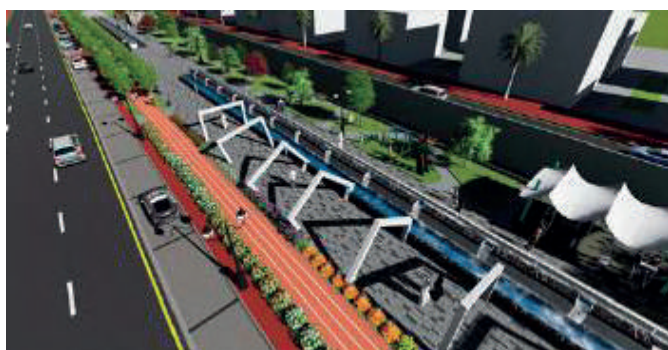
Prince Faisal bin Bandar street

CLIENT:



●PROJECT:

Development and improvement of streets and roads in riyadh city (Stage -8).



Length: _____ [4 km.]

SERVICE: Survey work Road design and development, Landscape resign. Electrical and irrigation designs, and trafca impact study for roads and intersections



STREET IN AL HAEER

CLIENT:



●PROJECT:

Development and improvement of streets and roads in Riyadh city (Stage -2).



SERVICE: Survey work Road design and development
Landscape design. Electrical and irrigation designs, and
traffic impact study for roads and intersections

TECHNICAL DATA Length: 600 m



ITCC



Project: Information Technology and Communications Complex CO Project- Digital City is in An-Nakheel District of Riyadh Kingdom of Saudi Arabia located at the north eastern quadrant of the intersection of Imam Saud Ibn Abdul Aa Road with Prince Turki bn Abdul Au A Awal Road.

TECHINICAL DATA: Area 1,000,000 m²

SERVICE: Traffic impact study

CLIENT: Raza



IMAM SAUD BIN ABDULAZIZ ROAD

CLIENT:



●PROJECT:

Development and improvement of streets and roads in riyadh city (Stage -8).



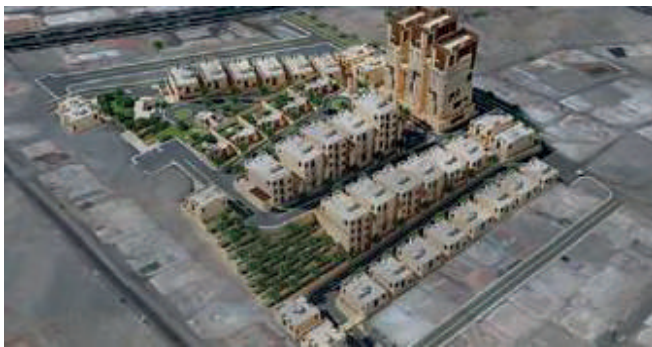
Length: _____ [8 km.]

SERVICE: Survey work Road design and development, Landscape resign. Electrical and irrigation designs, and trafrc impact study for roads and intersections



AL KHALDIAH

CLIENT:



Project:activities-a central park Tourism and commercial services,tourist chalets and vilas, building service, Diving Education center,A cultural and entertainment center Games area Spa and musium Clubhouse and administration Building marina Housing and hotel apartments.

TECHINICAL DATA: Area 74.540 m²



ALDESEH RESORT

CLIENT:



أمانة منطقة تبوك
Municipality Of Tabuk



Area: _____ [158.278km.]

● PROJECT:

Resort - The creation of a tourist accommodation style that serves desert tourism in a new and different way for the present, which combines the service of accommodation and subsistence, the discovery of the desert and the experience of Bedouin life in an integrated framework of basic services.

SERVICE: Study, Preliminary design, Design alternatives
Development of design, Ideas development. Final design.



TAKHER PROJECT

CLIENT:



Area: _____ [307.300 M2.]

● PROJECT:

Tourist vilage and 4-star hetels and S stars, Tourist entertainment activities a central park Tourism and commencial services,tourist chalets and villas building service,Diving Education centerA cultural and entertainment center, Games areaSpe and musium, Clubhouse and administration Building.marina, Housing and hotel apartments.

SERVICE: Study, Preliminary design, Design alternatives
Development of design, Ideas development. Final design.



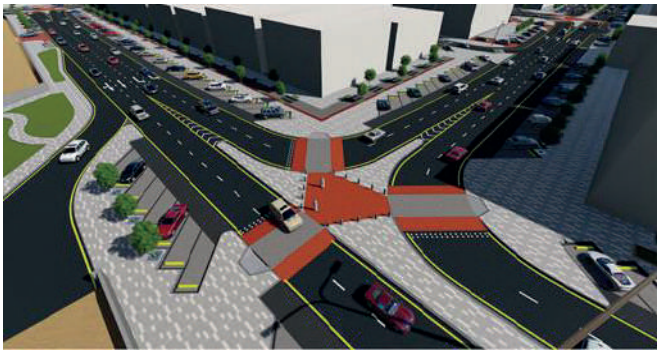
STREETS IN AL-MOROJ ZONE

CLIENT:



●PROJECT:

Development and improvement of streets and roads in riyadh city (Stage -8).



Length: _____ [4 km.]

SERVICE: Survey work Road design and development, Landscape resign. Electrical and irrigation designs, and trafç impact study for roads and intersections



QYAL PROJECT

CLIENT:



أمانة منطقة تبوك
Municipality Of Tabuk



● **Project:** Urban planning and urban design-Tourist village and star hotels-and stars Tourist entertainment activities a central park tourism and commercial services, tourist chalets and villas, building service Diving Education center A cultural and entertainment center, Games area Spa and museum. Clubhouse and administration Building, marina, Housing and hotel apartments.

TECHINICAL DATA: Area 420.000 m²

SERVICE: Study. Preliminary design. Design alternatives, Development of design ideas development Final design.



MONITORING OF VISUAL DEFORMATION ELEMENTS

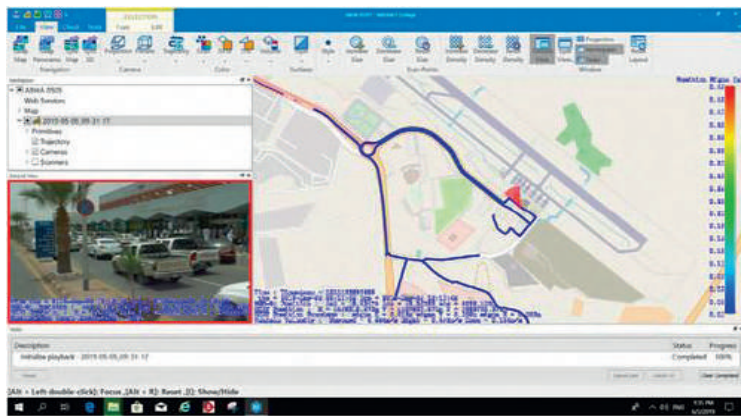
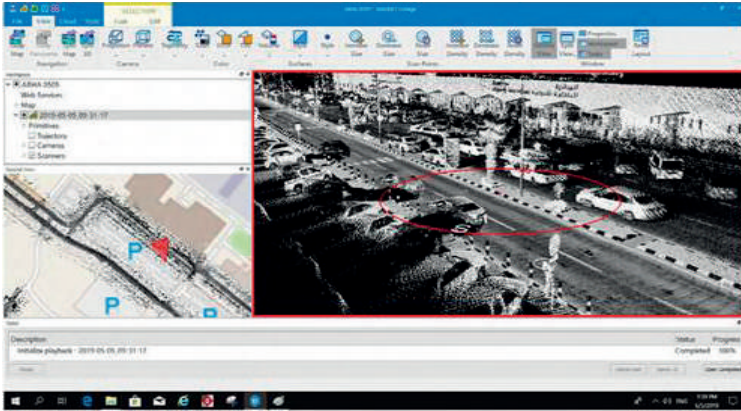
CLIENT:



أمانة منطقة عسير
ASSIR MUNICIPALITY

●PROJECT:

Monitoring of visual deformation elements and survey works.



SERVICE: Urban design surveying and improvement of urban landscape and road design.

TECHINICAL DATA: 5100 Hectares.



TRAFFIC IMPACT STUDY FOR TRAFFIC IMPACT STUDY FOR



SERVICE: The objective of this traffic impact study (TIS) is to assess the existing traffic operation and future traffic conditions, to identify the impacts and flow pattern changes on road network adjacent to the proposed warehouse blocks at AlKharj road in Heet district, Ahulai municipality south east Riyadh with a total area of 418271 . m, assessing the traffic flow condition, level of service (LOS) and traffic safety, parking demand, and accessibility.

SCOPE OF WORK: Access & Egress Strategy

- Traffic modeling based on the 4-step demand modeling
- Trip Generation
- Trip Distribution
- Parking provision and capacity analysis

CLIENT: Kaden investment

KING FAHD MEDICAL CITY PARKING AND TRAFFIC STUDY

CLIENT:



● PROJECT:

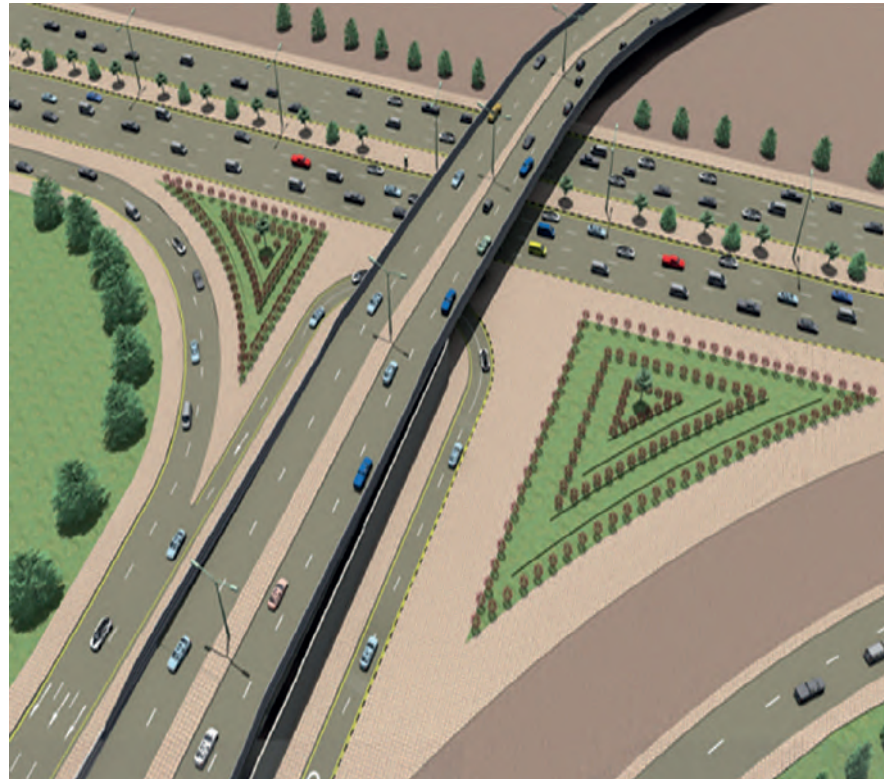
King Fahad Medical City is located at a strategic location in the heart of Riyadh, and is considered one of the largest and most advanced medical complexes in the Middle East with an area around 500,000 square meters.

Scope of work:

- Internal circulation assessment
- Parking provision and capacity analysis
- Queuing analysis on the entrances and exits of the City.
- Swept Path Analysis of emergency vehicles on the internal road network
- Public Transport feasibility study, user feedback assessment

TRAFFIC STUDY FOR ORUBA ROAD KING KHALID ROAD JUNCTION

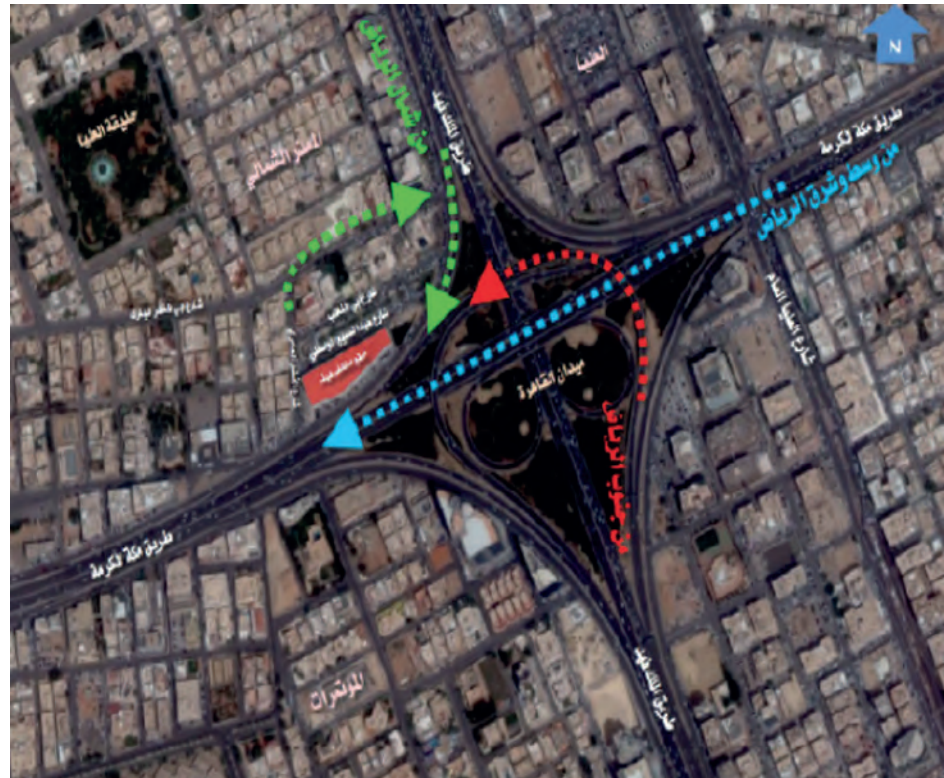
CLIENT:



PROJECT: The assessment of this Junction was commissioned by Arriyadh Development Authority in view of future developments that are being launched in the area such as Mals and The Medical Village, Country Kingdom of Saudi Arabia

SCOPE OF WORK: Import from Arriyadh Strategic Traffic forecast Model (ASTIM) to PTV Visum
- Validate accuracy of road network
- Calibrate the demand model using traffic counts and demographic information

TRAFFIC IMPACT STUDY FOR HAIF HOSPITAL



CLIENT: Haif Company

PROJECT: Haif Hospital is located strategic location in the heart of Riyadh at the junction between Makkah Road and King Fahd Road. Hence the connectivity of the he New Master Plan is a major factor for the success of the Hospital.

SCOPE OF WORK:

- Access & egress Strategy
- Traffic modeling based on the 4 step demand modeling
- Trip Generation
- Mode Choice
- Traffic circulation plan
- Parking provision and capacity analysis



KING SAUD UNIVERSITY

CLIENT:



PROJECT: King Saud University Preparatory College Parking Study aims at examining the existing situation, proposing mitigation alternatives, selection of most suitable measures agreed with KSU management, conducting the design of selected alternative, and prepare tender documents for construction.

SCOPE OF WORK:

- Internal circulation assessment.
- Parking provision and capacity analysis.
- Queuing analysis on the entrances and exits of the City.
- Swept Path Analysis of emergency vehicles on the internal road network.
- Internal road network concept design.

GULAIBAT MALL HOTEL PARKING STUDY



CLIENT: RSR

PROJECT: Gulaibat Mall is a prestigious project developed by Rashid Saad Al-Ranhid & Sons Co. It is located in the region of Gulaibat, Saudi Arabia, providing retail, hotel and residential services. Located near Al-Hufuf Downtown and along

SCOPE OF WORK:

- Parking study
- Internal circulation assessment and parking layout revision
- Access and Egress strategy
- Road safety assessment



EVALUATING ECONOMIC BENEFITS OF PUBLIC TRANSPORT



PROJECT:

Goal of this step was to have an overview of the data that is available an overview of the tools and instruments that are available to generate information needed in applying Benefe Cost Analysis (BCAL, Cost Risk Analysis (CRA) and the Wider Economic Benefits (WEB) into project evaluation

Stakeholders data:

TGA, Ministry of Transo and Municipal atherities, General Authority for Statiutics, Riyad Metro, Metro Jeddah Comoany. Makkah Mass Ral Transit, Saudi Railways Organiza Ministry of Economy and Planning, Provincial w Aurdoum Arriyadh Development Authority Saudi Aramco

Scope of work:

- Tramportanon Data
- Economic Data

Data on traffic volumes, ridership predictions, congestion were collected from the relevant authorities and other stakeholders



PUBLIC TRANSPORT STUDY FOR SKAKA AND SURROUNDING CITIES IN AL-JOUF



PROJECT:

The analysis of the existing transport services is combined with the demand determination which is mentioned in the request for proposals in the second phase. In this part of the analysis, the following subjects are studied

- Traffic movement (traffic volumes, trip time, vehicle classifications etc).
- Road characteristics, such as road width and number of lanes, intersections traffic lights

Scope of work:

Internal bus transport usage and Public transport user's characteristics
Existing taxi services
Rentacar services
legal internal transport modes;
Passenger Spot Measurement (us Stop Survey)

DATA:

Daily average trip length
Number of daily trips
The peak hour rate



WATER FRONT PROJECT

CLIENT:



أمانة منطقة تبوك
Municipality Of Tabuk



Area: _____ [725,000 M2.]

● Description:

developing an entertaining waterfront with a group of tourist attractions, 4 and 5 star hotels chalets marina, and a marine life museum

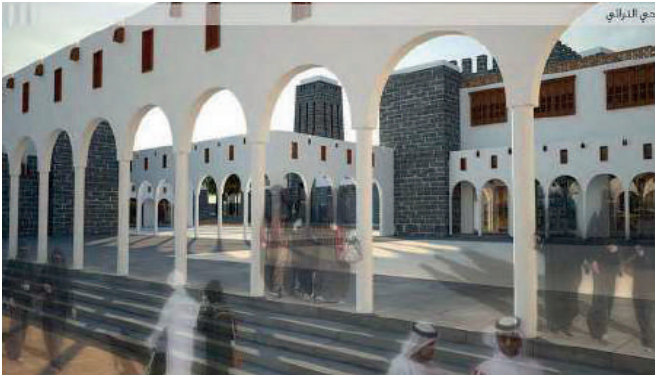


CULTURAL MARKET

CLIENT:



أمانة منطقة
المدينة المنورة
Madinah Regional Municipality



Area: _____ [12,000 M2.]

● Description:

Outdoor spaces, courtyards, and gates are designed, surrounded by traditional stores and a traditional museum

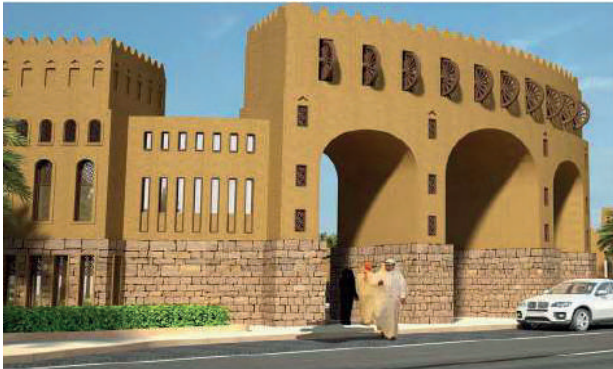


CULTURAL MARKET

CLIENT:



الهيئة العامة للسياحة والتراث الوطني
Saudi Commission for Tourism & National Heritage
مستقبل وطن، تراثنا هويتنا
sctth.gov.sa



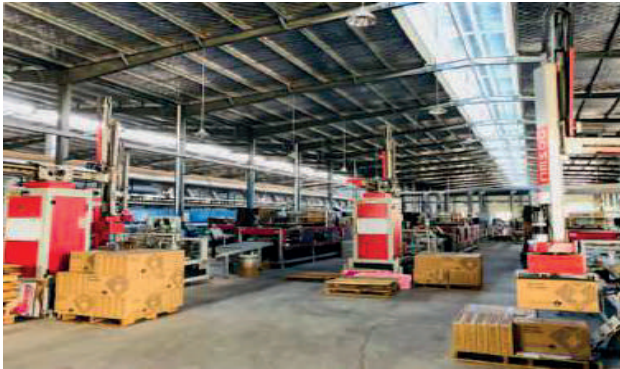
- **Description:**

The aim is to revitalize the area of Taymaa



CULTURAL MARKET

Jamal Industries



● Description:

Implementation Design and supervision of Jamal Industry Factory for Ceramic



WATER FRONT PROJECT

CLIENT:



أمانة منطقة
المدينة المنورة
Madinah Regional Municipality



● Description:

the metal roof covered with GRC plates is subtracted with a level of Arabic motifs and patterns with a Hijazi style that is reflected on the ground with the sunlight; this creates a separated kind of architecture called shade & shadow design effect



PEDESTRIAN TUNNELS

CLIENT:



Area: _____ [26,700 M2.]

● Description:

a design that is in keeping with the city's architectural character and incorporates Arabic motifs and patterns



DAMMAM PUBLIC METRO



Lenght: _____ [160 Km.]

● **Description:**

the project includes: 8 public transport interchange, 350 Km feeder bus networks, 7000 park and ride spaces, 97 stations



ROADS MAINTENANCE

CLIENT:



• Description:

roads implementation, supervision
and infrastructure maintenance

BELQARN PARK

CLIENT:



● **Description:**

Belqarn park & youth center



AL-NAMAS PARK

CLIENT:



أمانة منطقة تبوك
Municipality Of Tabuk



- **Description:**
Alnamas park

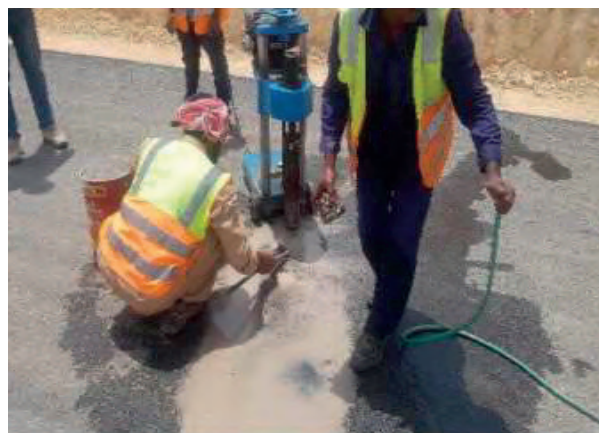
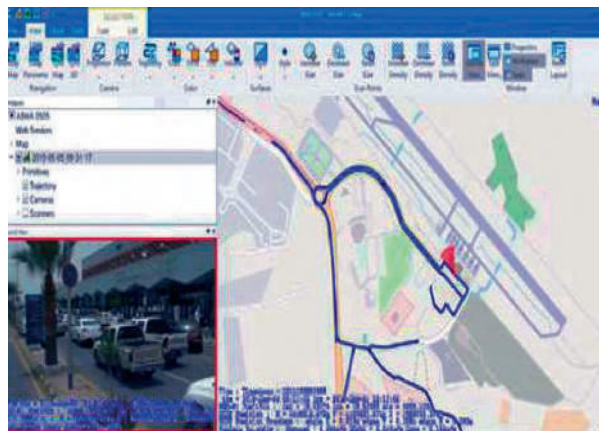
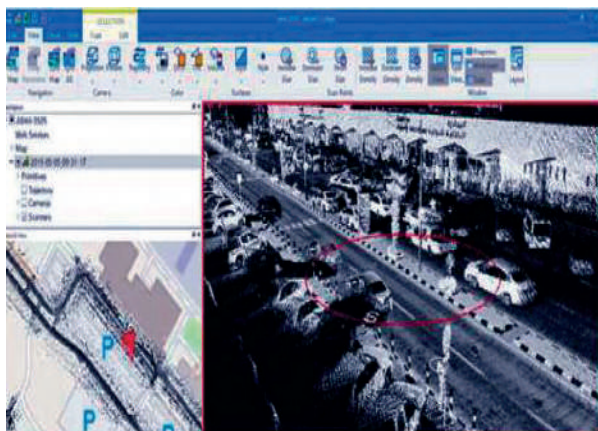


DEFORMATION MONITORING

CLIENT:



امانة منطقة عسير
ASSIR MUNICIPALITY



Length: _____ [5, 100 Hectar.]

● Description:

monitoring of visual deformation elements using survey works and the improvement of urban landscape & road design

INDUSTRIAL BUILDINGS



Brief :

Our leading expertise and innovative approaches have made us excel in the industrial sector.

From the start, we have created innovative facilities and processes that spur efficiency.

Bringing new levels of quality to industrialized building system & facilities.

Inspired by the complexity we observed in the field, we pioneered streamlined approaches and technological applications to help clients advance efficiency, elevate safety, and accelerate delivery.



INDUSTRIAL BUILDINGS



We Provide Solutions :

- Facility Programming and Planning
- Business Process Design and Evaluation
- Internal Operations Planning and Industrial Engineering
- Equipment Set and Layout Enhancing.



INDUSTRIAL BUILDINGS



Types of Buildings:

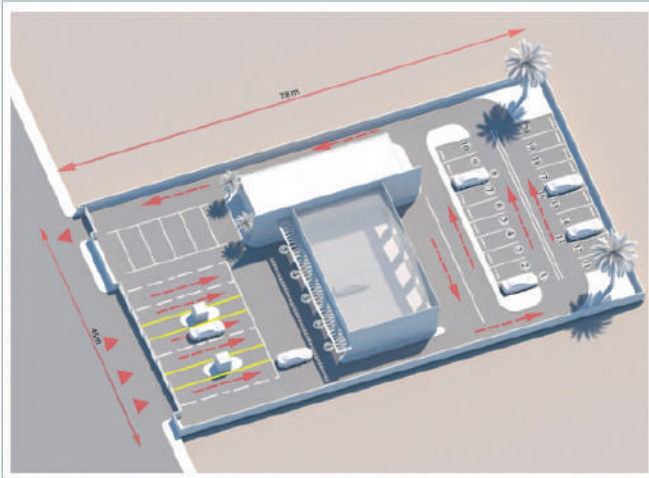
- Manufacturing Facilities
- Factory Buildings
- Warehouses
- Steel Frame Facilities
- Automotive Inspection Centers -Petrol Stations



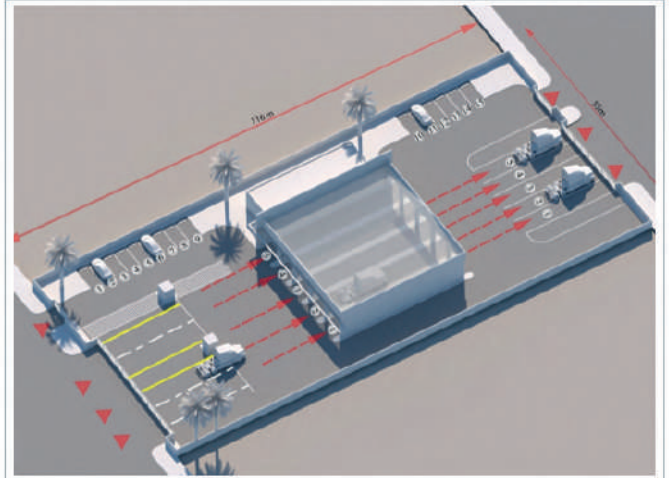
Our Team`s Approach and Process



نموذج يوضح ارتفاعات الكتل والعلاقات بينها وحركة المركبات داخل منشأة فحص 5 مسارات للنقل الخفيف .



نموذج يوضح ارتفاعات الكتل والعلاقات بينها وحركة المركبات داخل منشأة فحص 5 مسارات للنقل الثقيل .





الدرجة
الأولى



وزارة الشؤون البلدية
والقروية والإسكان
Ministry of Municipal Rural Affairs & Housing



شهادة تصنيف مقدمي خدمات المدن

تمنح وزارة الشؤون البلدية والقروية والإسكان شهادة تصنيف الدرجة الأولى

للمنشأة مشاري الشثري للاستشارات الهندسية

في قطاع المكاتب الهندسية

5310000167

رقم الترخيص

الاستشارات الهندسية للطرق والجسور والاتفاق، الاستشارات الهندسية للسكك الحديدية، الاستشارات الهندسية للموانئ البحرية وإنشاءات النقل البحري، الاستشارات الهندسية للمياه والصرف الصحي، أنشطة الاستشارات البحرية، أنشطة الاستشارات الجيولوجية، إدارة المشاريع الانشائية، أنشطة الاستشارات الهندسية والمعمارية، الاستشارات الهندسية للتخطيط الحضري، الاستشارات الهندسية لعمارة البيئة، استشارات الهندسة الميكانيكية

النشاط

- يسري مفعول هذه الشهادة حتى تاريخ 19/06/1444 هـ / الموافق 12/01/2023 م
- تصدر هذه الشهادة إلكترونياً وعلى الجهات المالكة للمشاريع التحقق من الشهادة المقدمة من خلال موقع الوزارة



وكيل الوزارة لتصنيف المقاولين
د أحمد بن حميل قطان

تصنيف
مقدمي خدمات المدن





info@mnseng.com

www.mnseng.net

P.O'.BOX: 2666

Riyadh:11461

Tell: +920008999